





## CONTENTS



### EDITORIAL BOARD

**Chairman:** HU Xiukui

**Vice Chairmen:** DONG Na, TANG Jian

**Members:** WANG Dalun, WANG Zhengyuan, WANG Ai, AI Song, SHI Qinghua, LU Hong, LING Hongbing, FENG Tao, LIU Taisheng, LIU Demin, JIANG Guoyan, SUN Qi, LI Weicheng, LI Ting, LI Xibin, YANG Jinbing, ZOU Jie, SONG Juzhong, CHEN Wenxue, FAN Xiaoping, ZHOU Jie, ZHAO Yongzhi, ZHONG Lianbing, YUAN Ling, MO Erbing, MO Chunhong, DUO Lin, LIANG Quanwei, SHU Huaan, ZENG Mingfu, XIE Guangyou, YAN Zhiguo, LAI Chengyi, LEI Yu, PAN Shaocheng

**Chief Secretary:** TANG Jian

**Sponsor:** Dongfang Electric Corporation

**Chief Editor:** HU Xiukui

**Vice Chief Editors:** DONG Na, TANG Jian

**Executive Editor:** LI Hong

**English Editor:** ZHANG Yuan

**Edited and Published by:**

Editorial Department of Dongfang Electric Review  
No. 18 Xi Xin Avenue, Gao Xin Xi District, Chengdu,  
Sichuan, P. R. China

**Postal Code:** 611731

**Tel:** 028-87898263

**E-mail:** dfdqpl@dongfang.com

**Submission Website:** <http://dfdqpl.xml-journal.net/>

**Overseas Distribution by:**

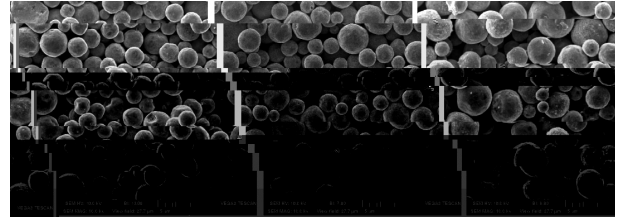
China National Publishing Industry Trading Corporation  
(P. O. Box 782, Beijing, P. R. C. )



---

---

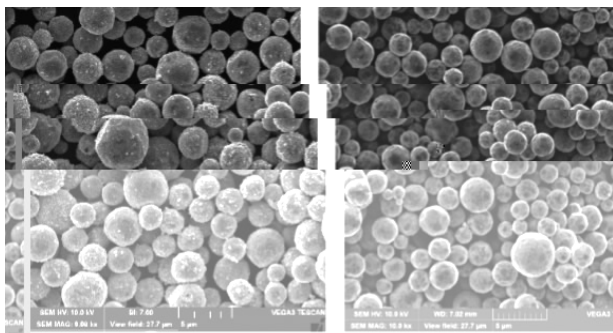




(a)pH=5

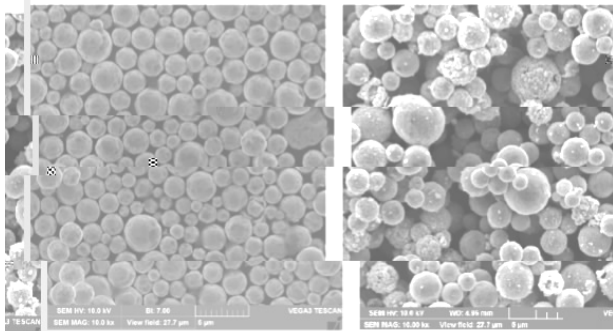
(b)pH=8

(c)pH=10



(a)20 °C

(b)30 °C



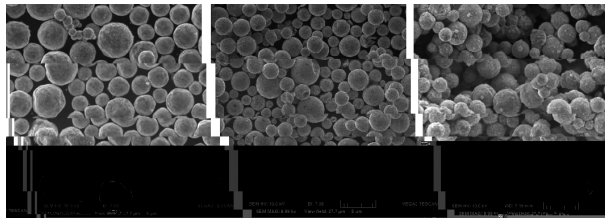
(c)40 °C

(d)50 °C

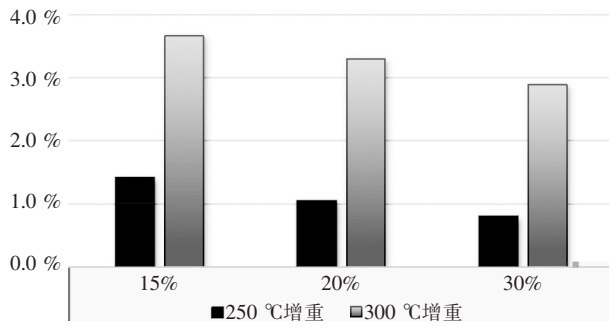
---

---

---



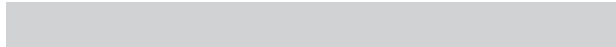
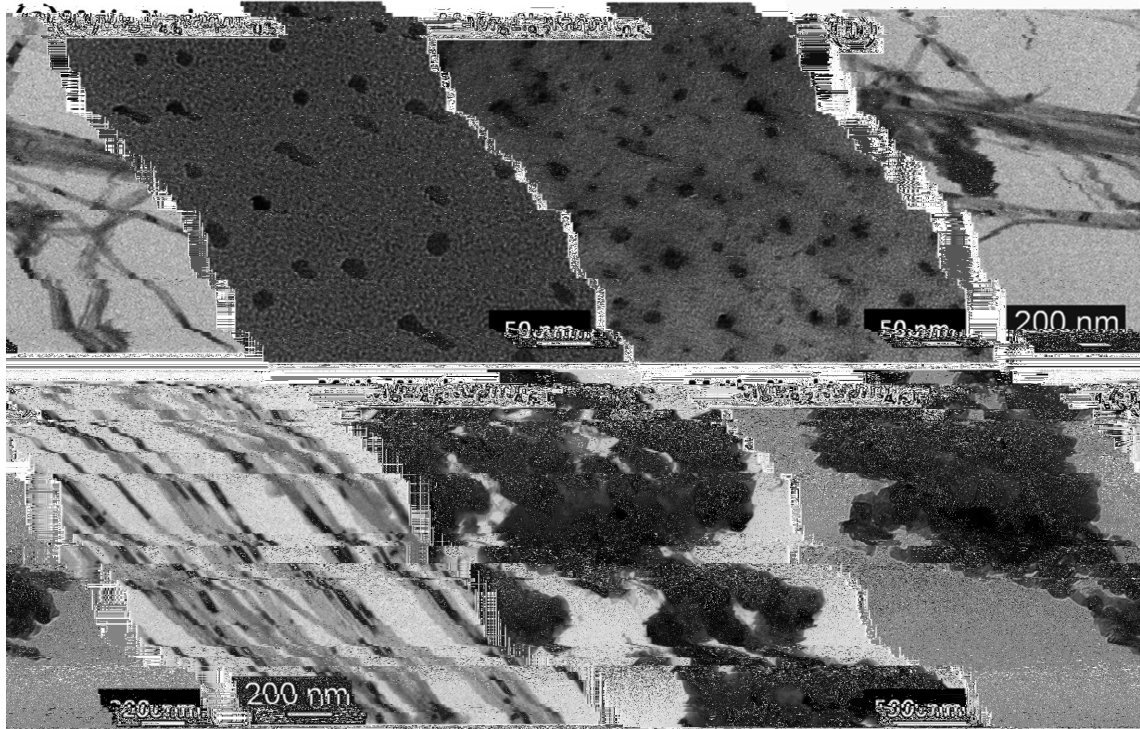
(a)设计银含 15% (b)设计银含 20% (c)设计银含 30%



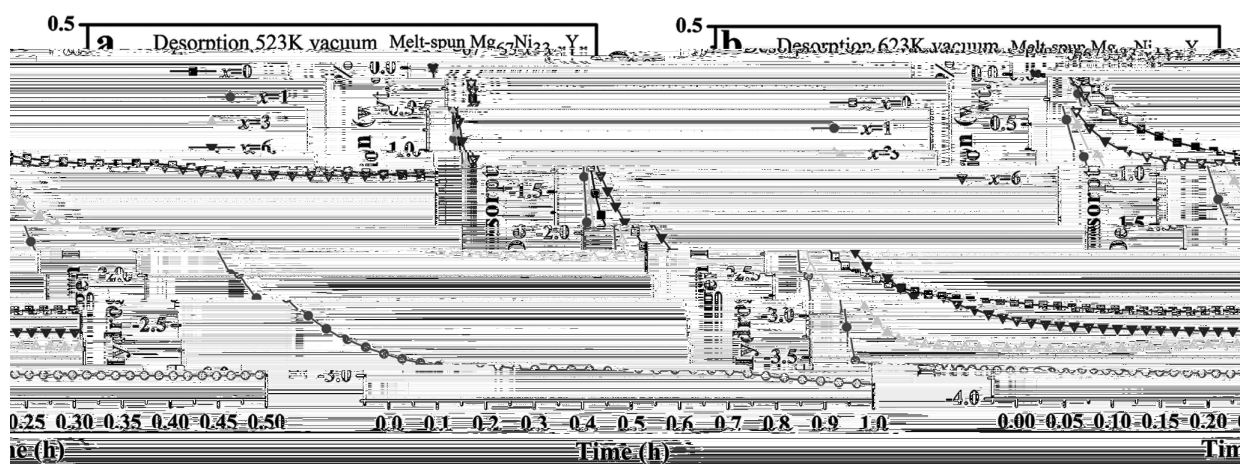


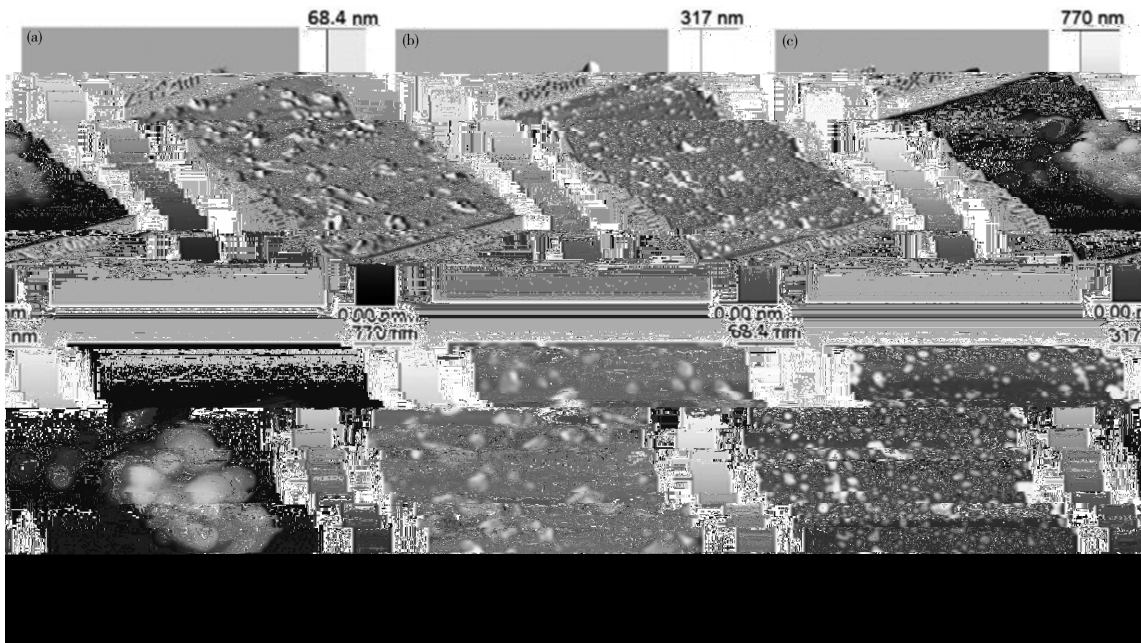


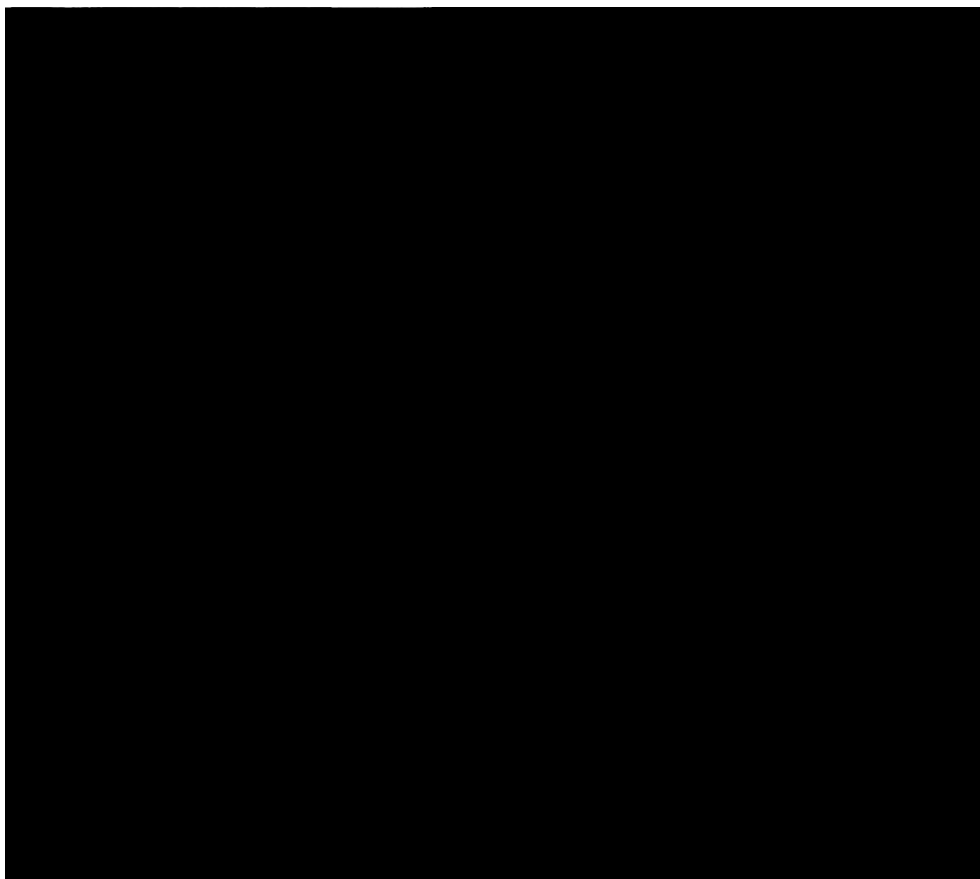










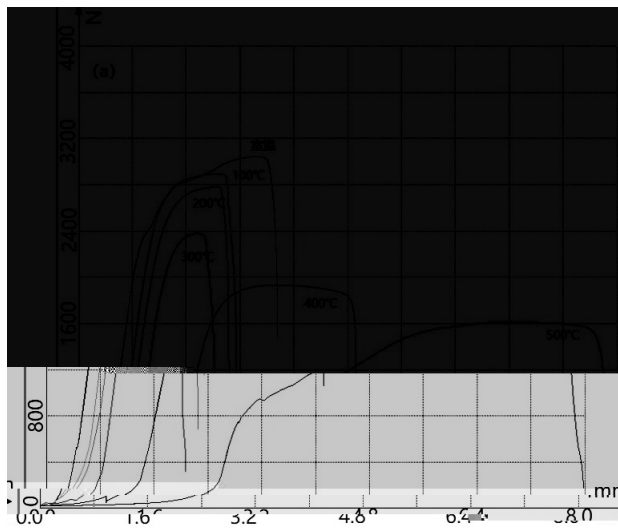




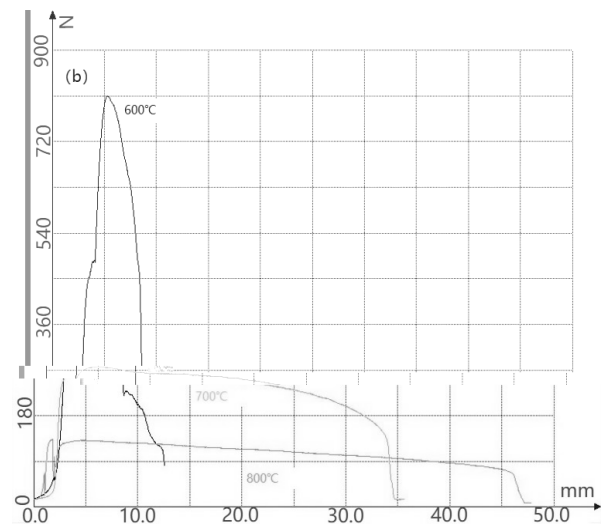




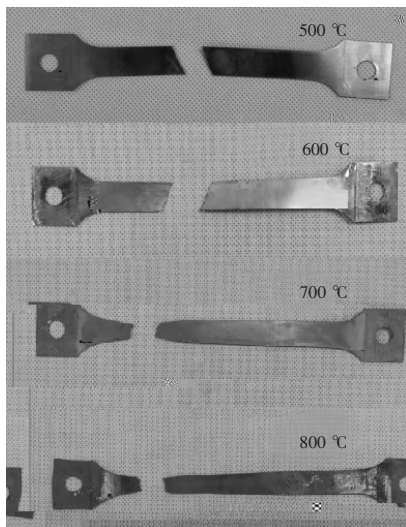




(a) 室温~500 °C



(b) 600 °C~800 °C



---

---

---



---

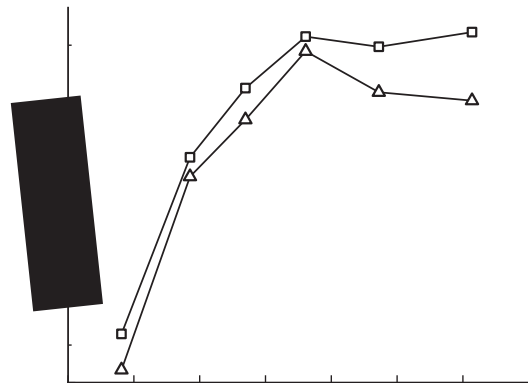
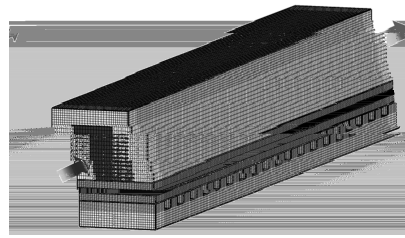
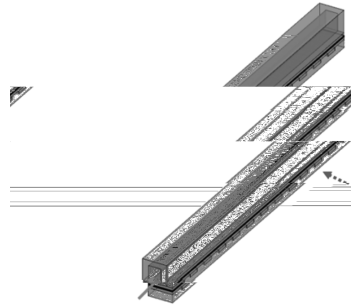
---





---

---





---

---

---

---

---

---

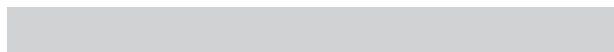
---

---

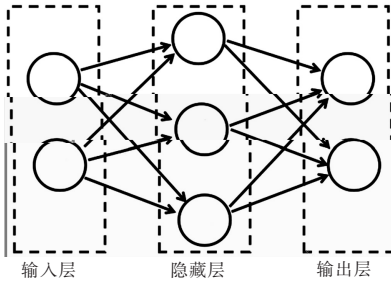
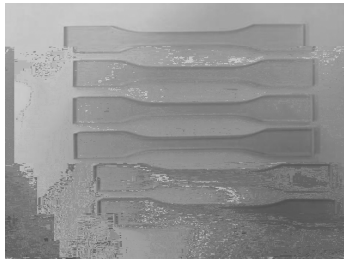
---

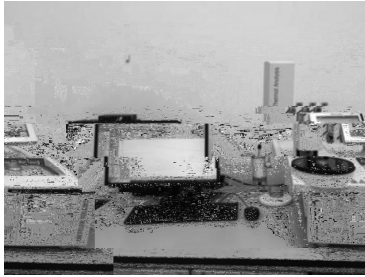
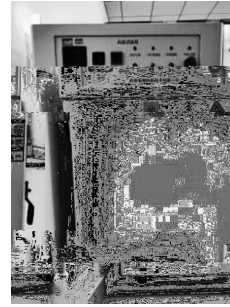
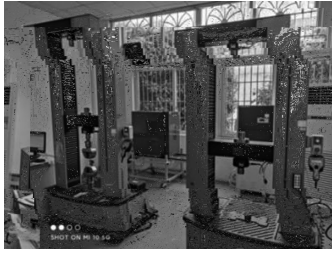
---

---







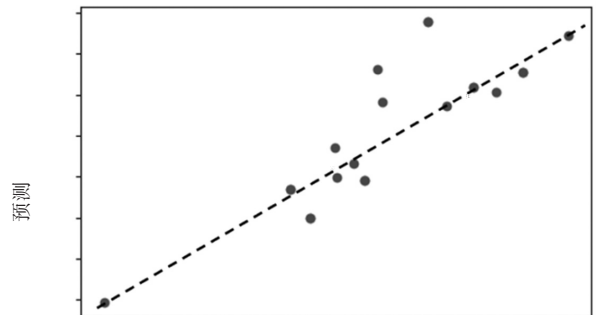
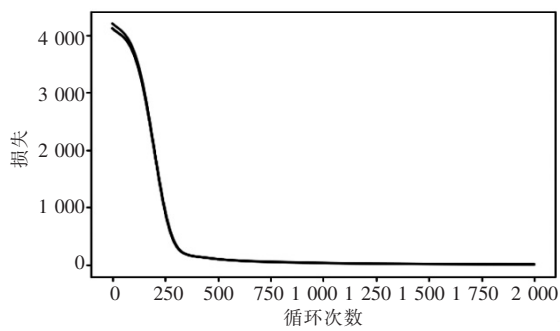
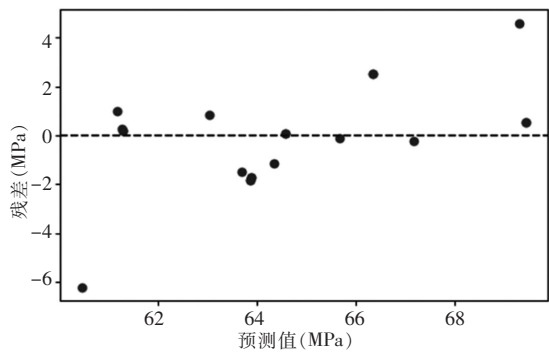
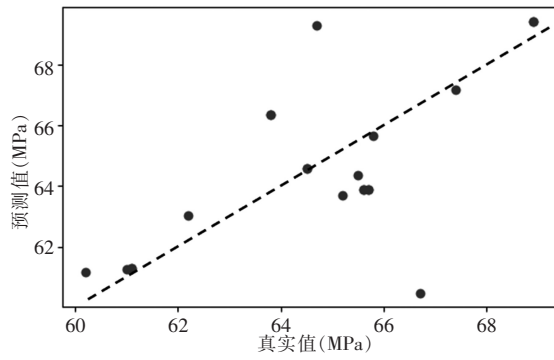
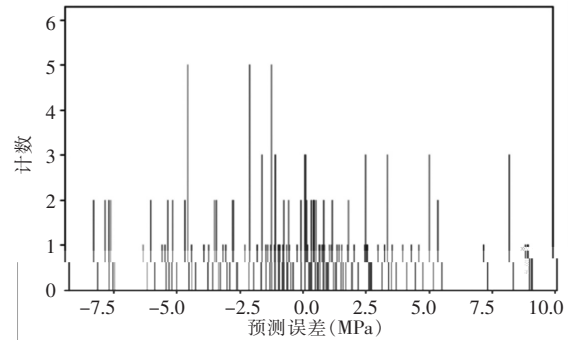


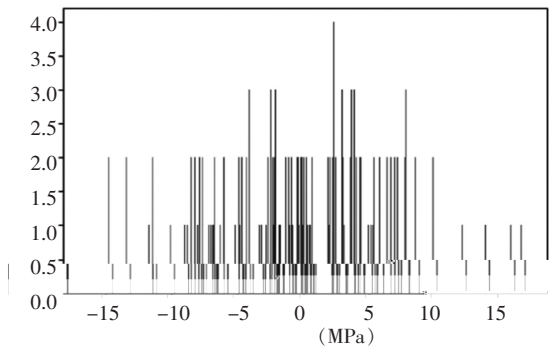
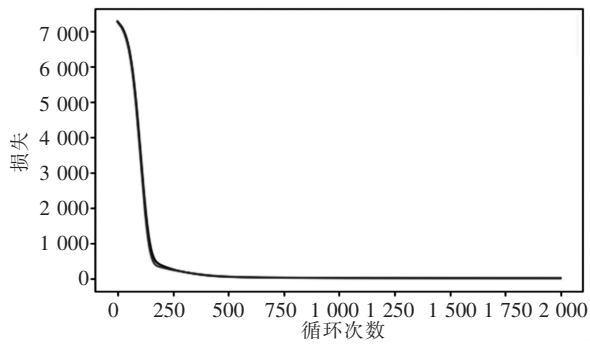
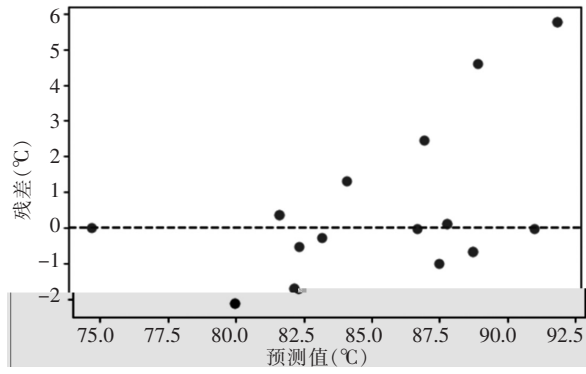
---

---

---

√



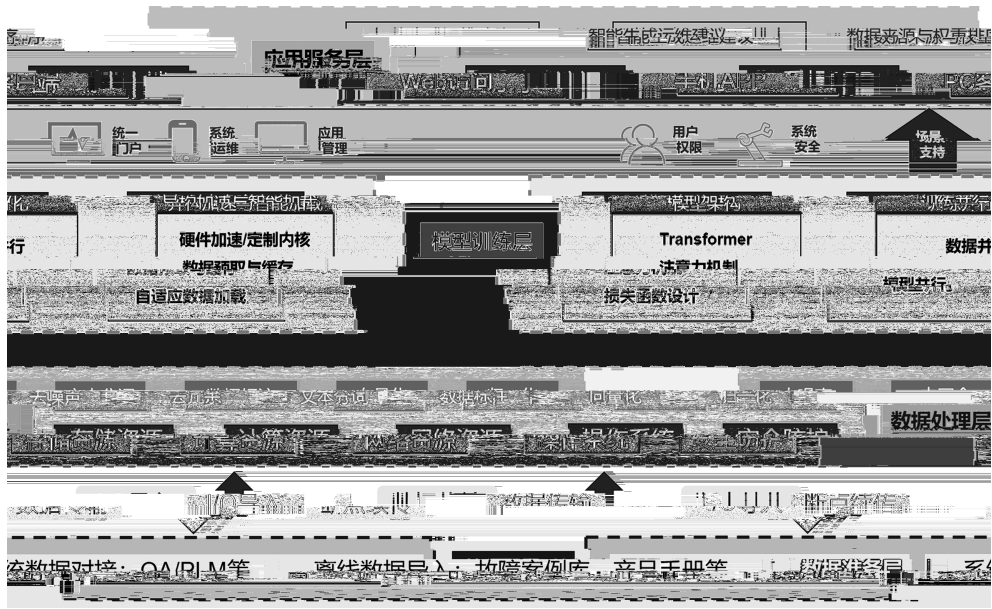




---

---



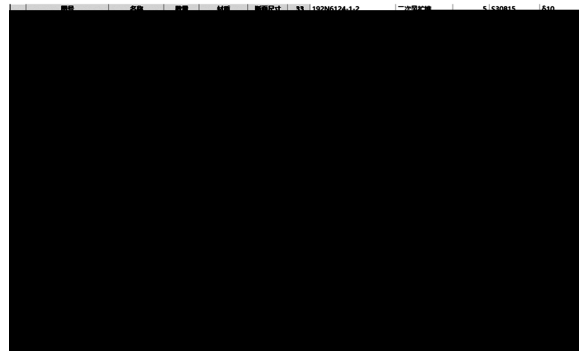
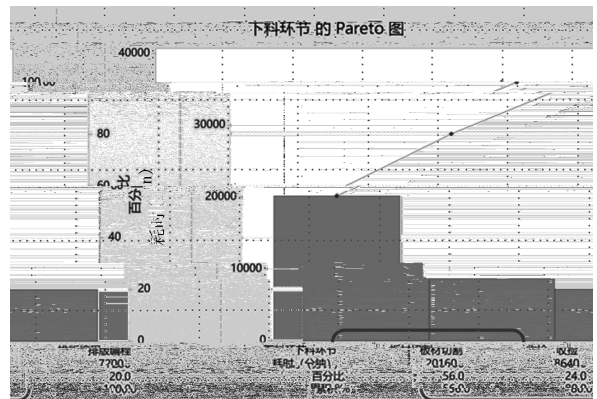


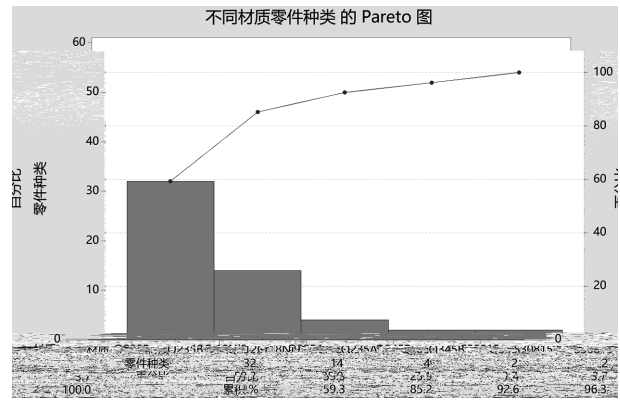
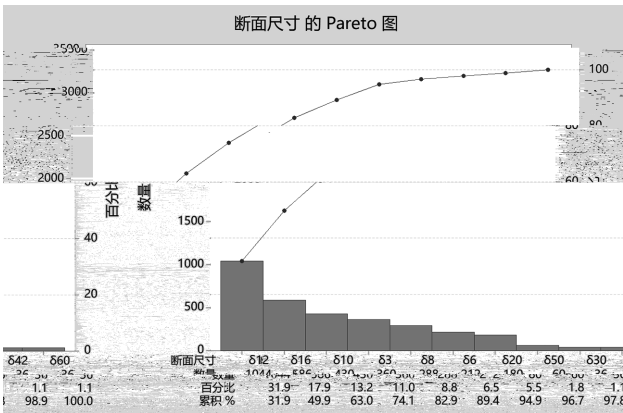
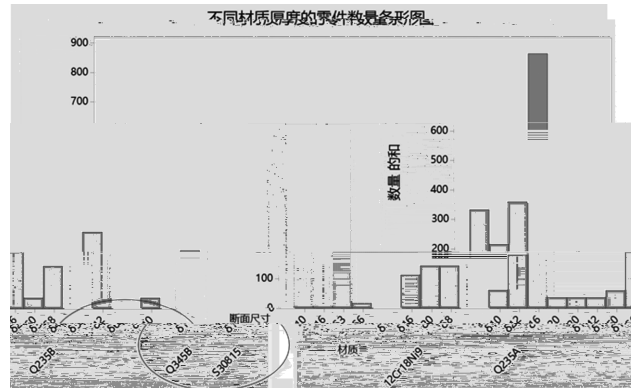
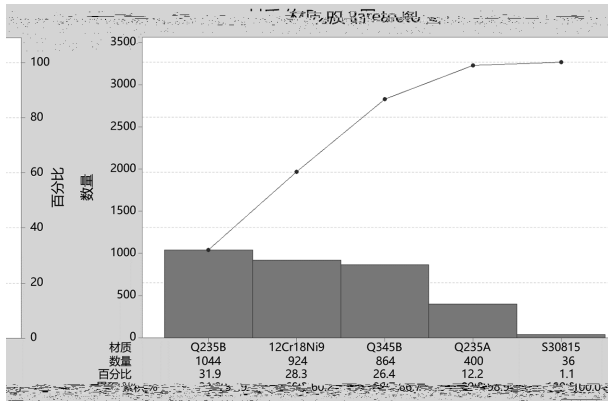


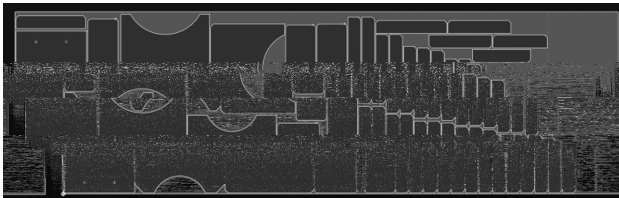
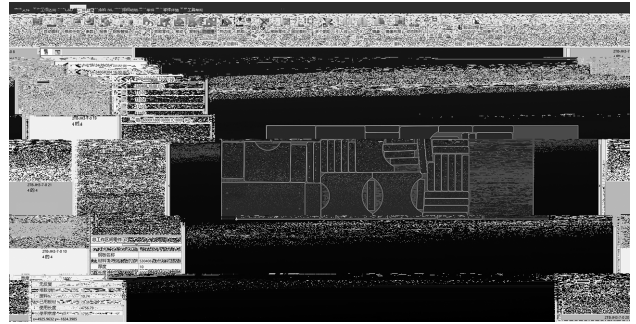


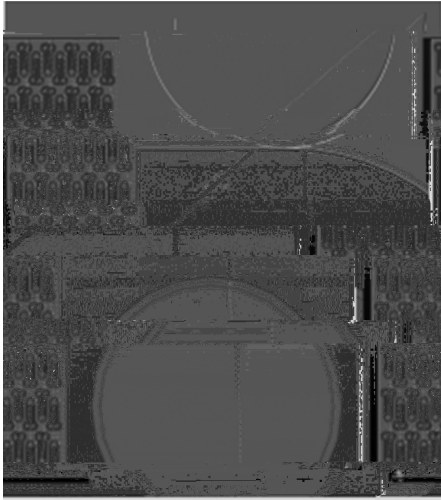
---

---

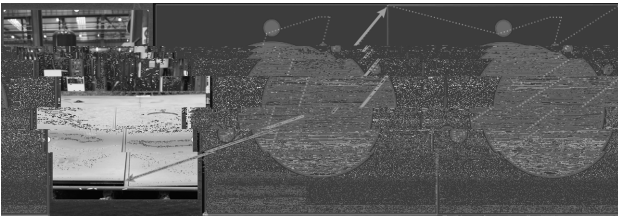








: 3,6 。 4、7  
。

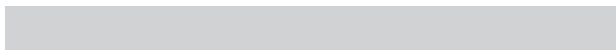


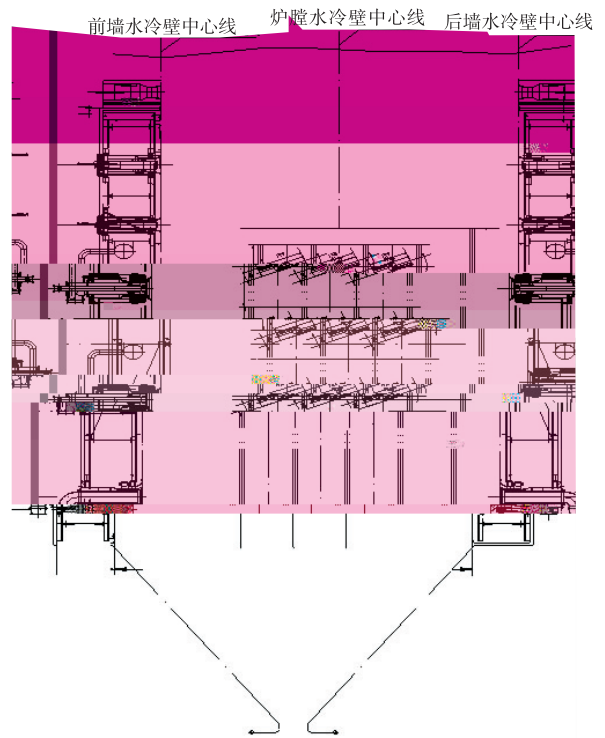
· \$ !

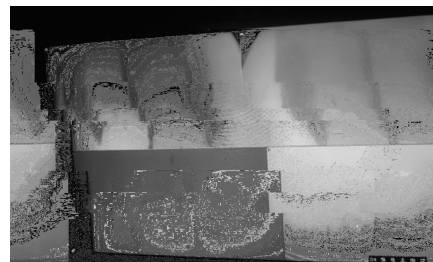
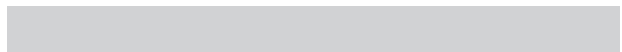
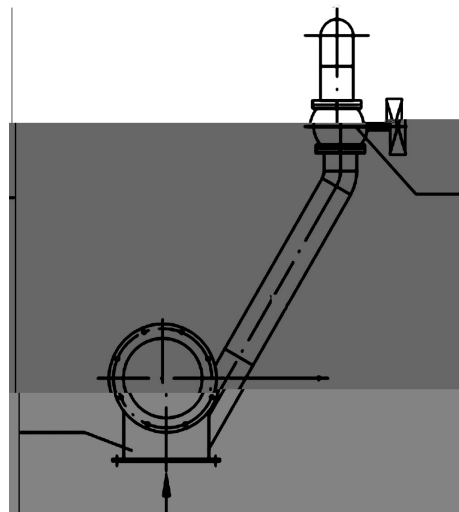
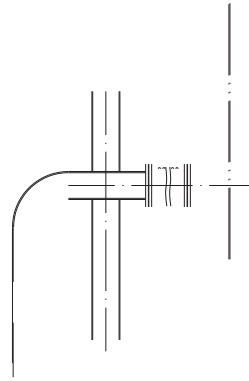


---

---







---

---

---

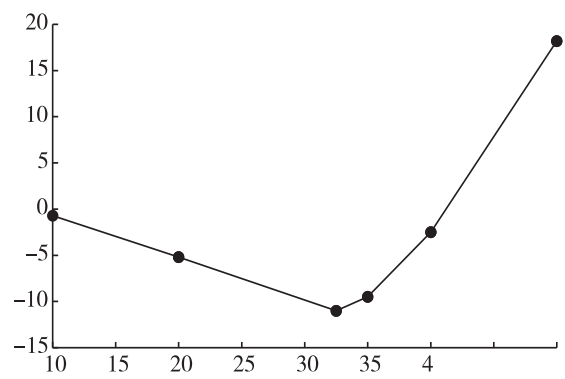
---

---

---

---

---



---

---



\_\_\_\_\_

\_\_\_\_\_

\_\_\_\_\_

\_\_\_\_\_

\_\_\_\_\_

\_\_\_\_\_

\_\_\_\_\_

\_\_\_\_\_

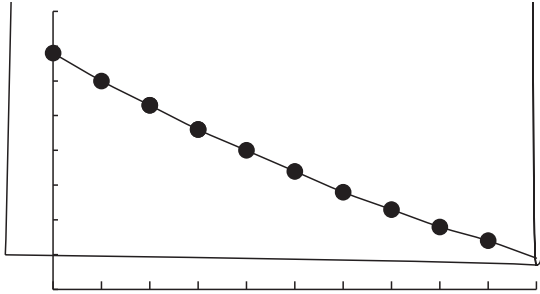
\_\_\_\_\_

√ \_\_\_\_\_

\_\_\_\_\_

\_\_\_\_\_





---

---

---

---

---

---

---

---

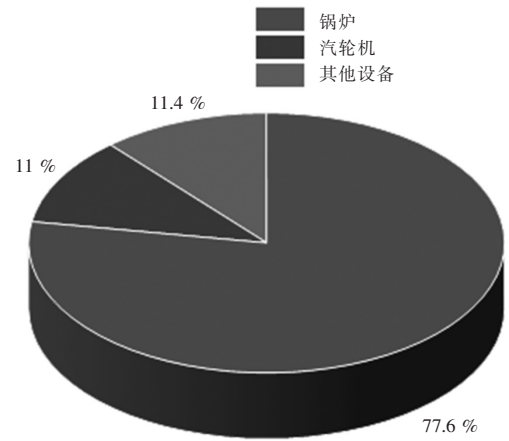
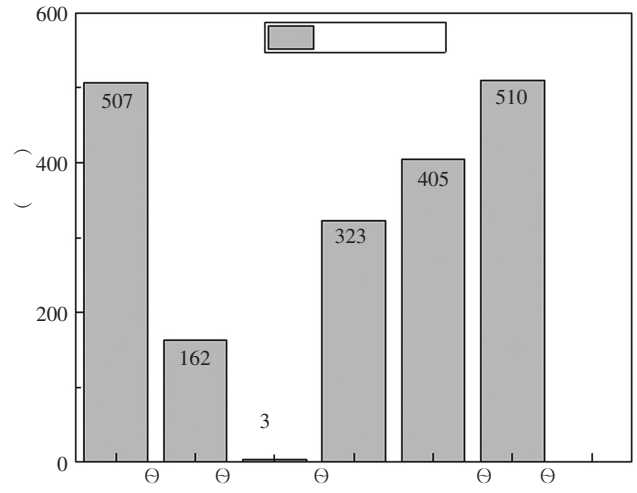
---



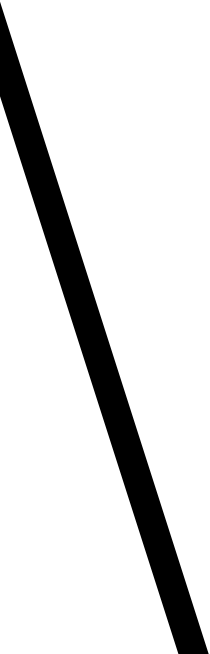
---

---





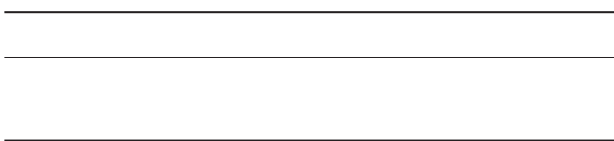




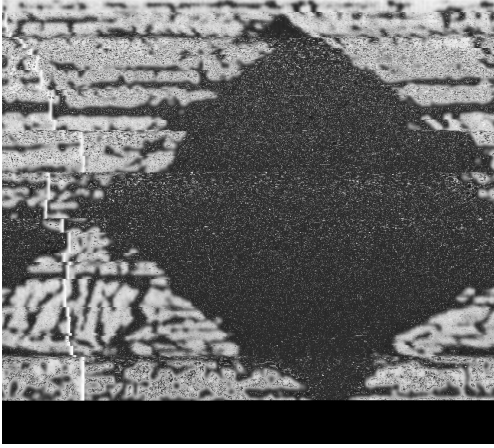
---

---

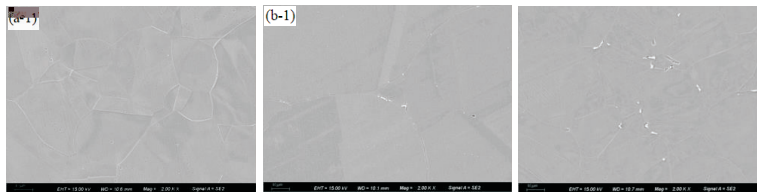
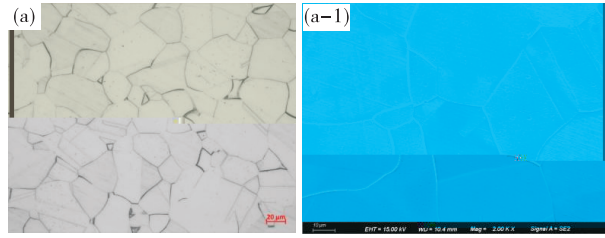


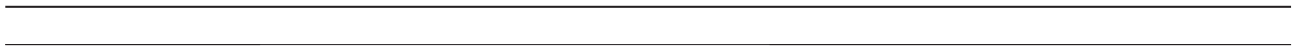
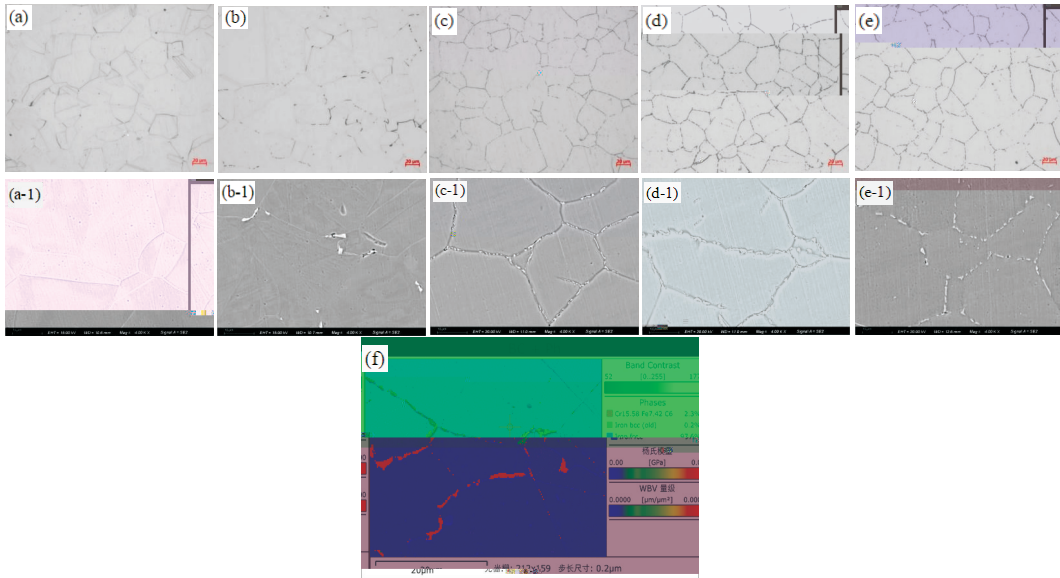


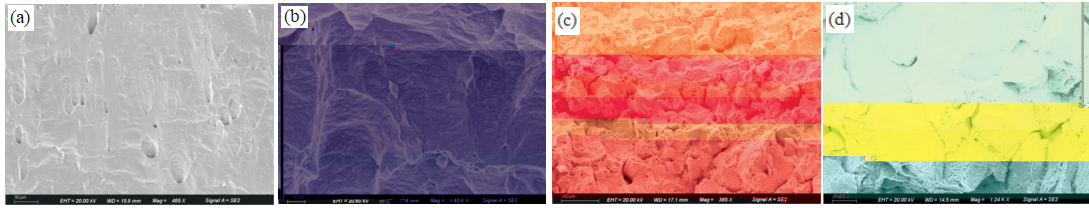
— !





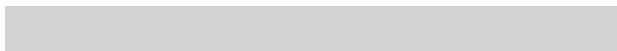


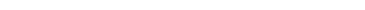




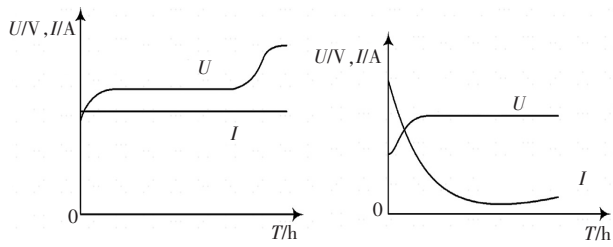
東  
電  
氣  
論  
叢  
刊

東



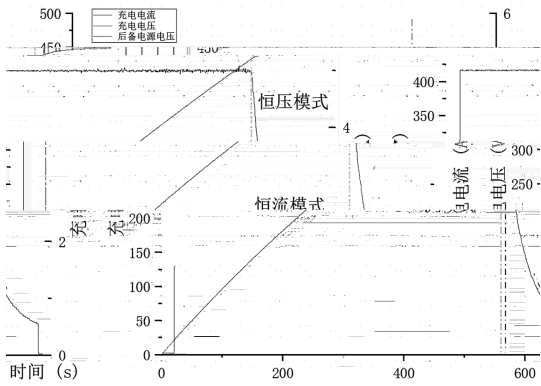






交流电源  
+ -

主



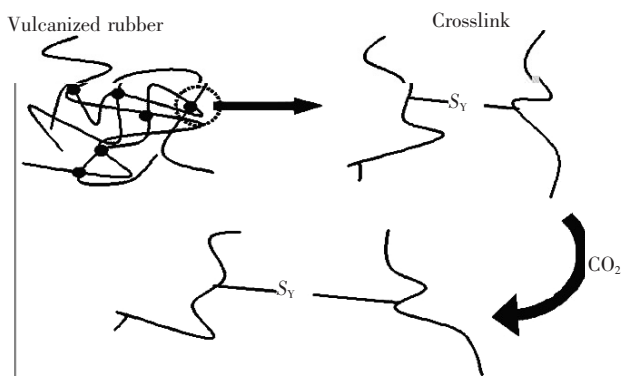




---

---



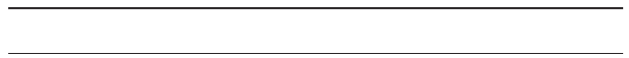
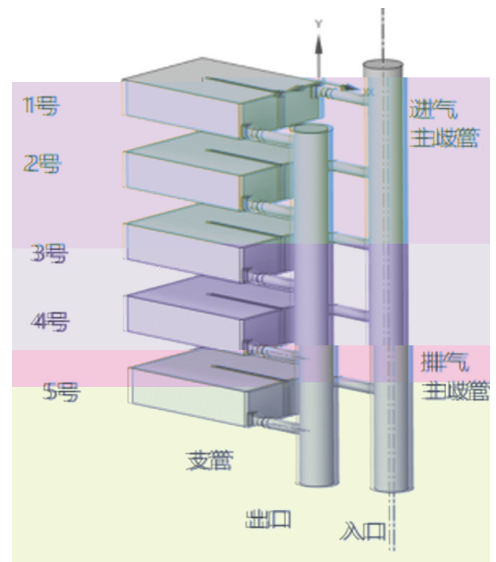






---

---



( — ) ( — )



(— |||)



—

—

—



—

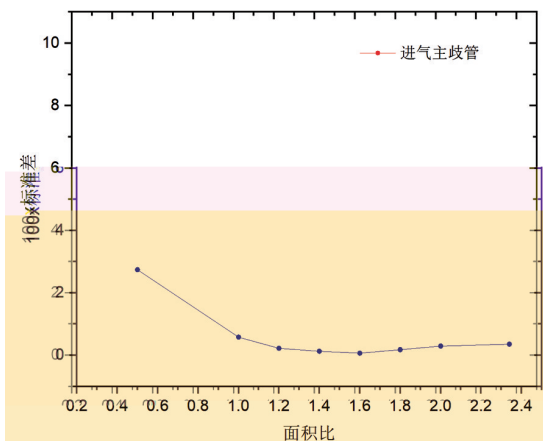
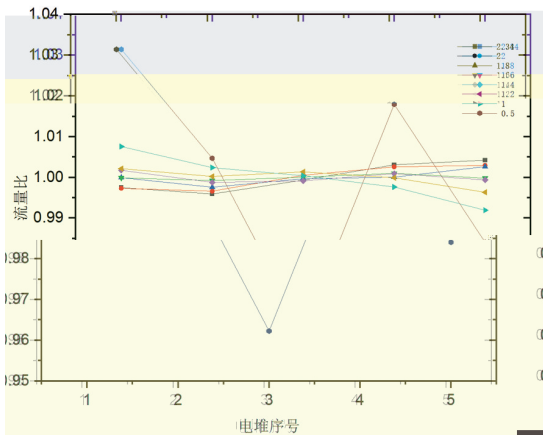
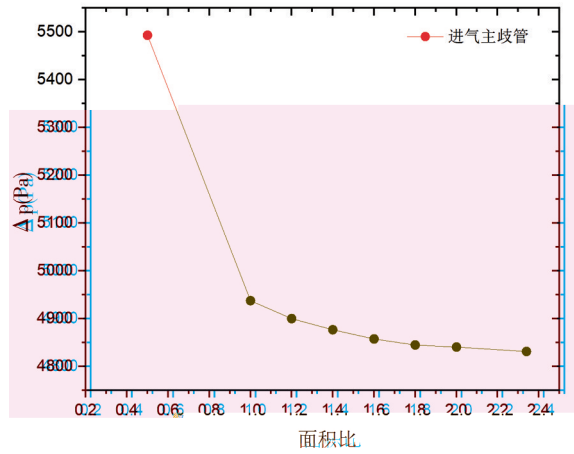
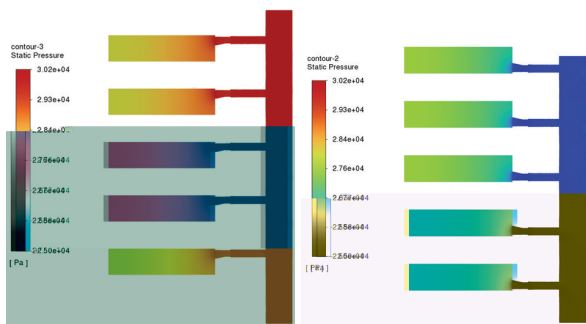
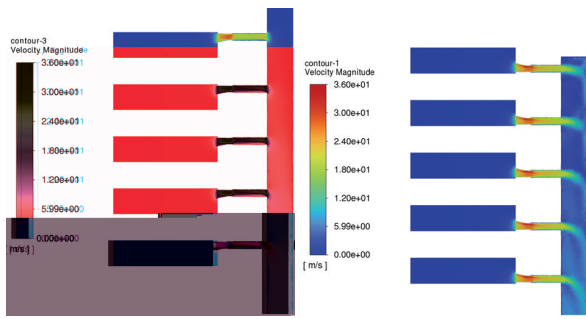
—

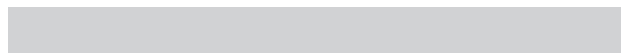
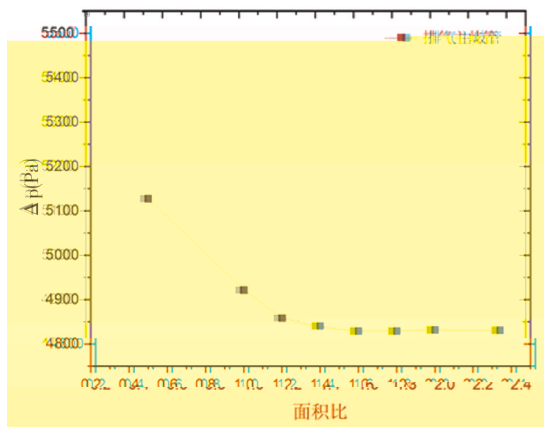
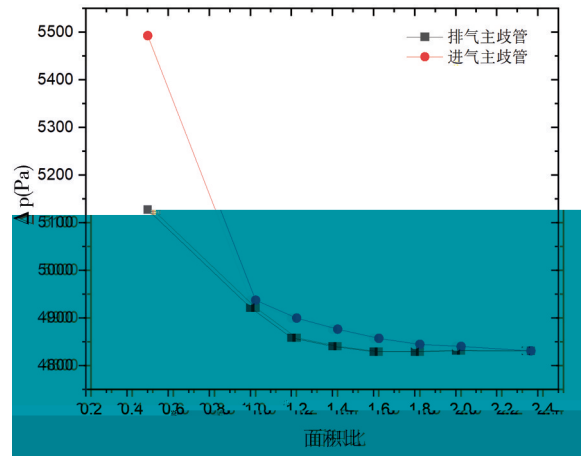
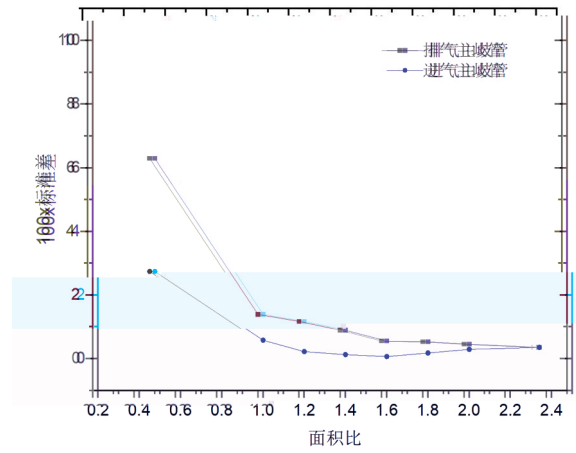
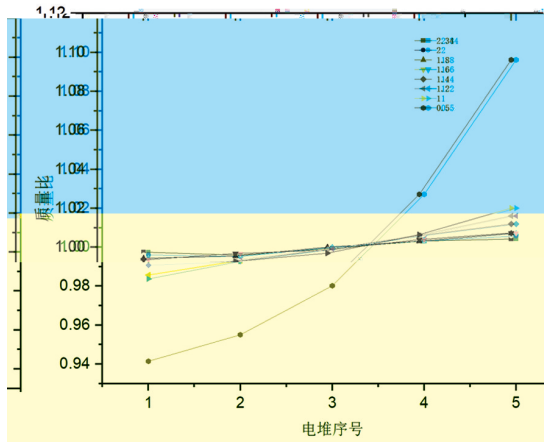


—

—

—





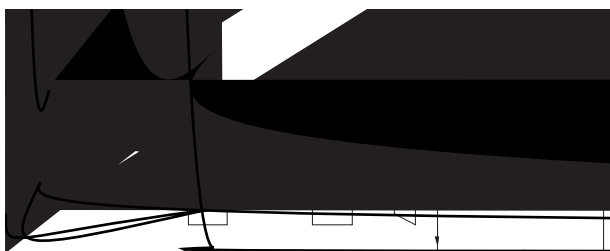
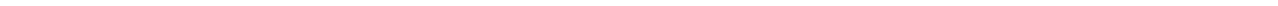
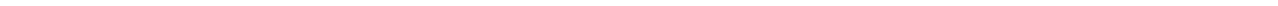
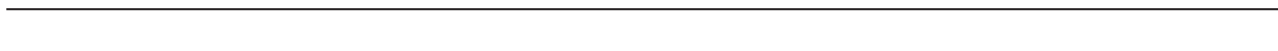




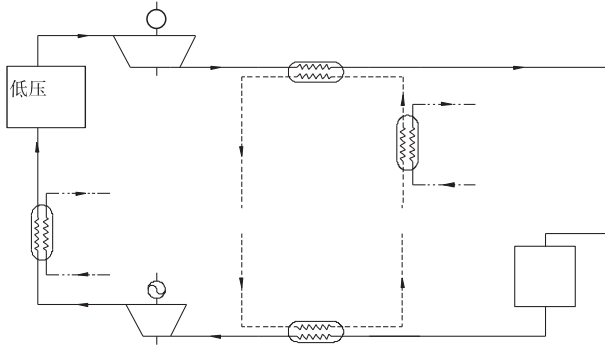
b

---

---







---

---

---

---

---

---

---

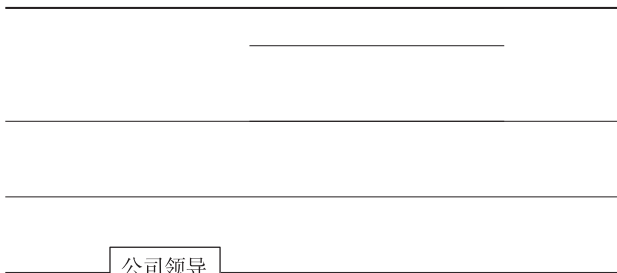
---

---

---







	项目部门	计划部门	设计部门	采购部门	生产部门
项目经理					
项目经理					
项目经理					





